

480 Double Play Drive, East Brainerd, TN 37421



The Orchid

Homesite 107

Quick Look

\$427,900

Beds 3

Baths 2

Stories 1

SqFt 1,726



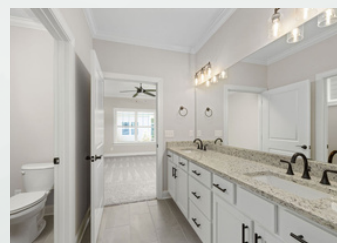
learn more
about this
home

Community

Engel Park

Features

- Spacious 2-Car Garage
- Covered Patio
- Laundry Room
- Walk-In Closet



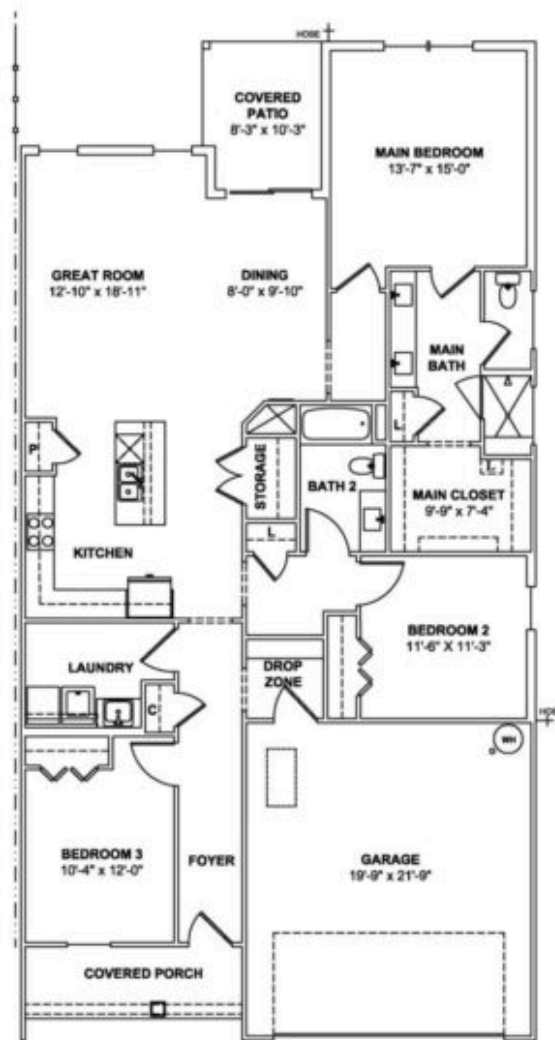
Contact a New Home Specialist

Call Brittany Shaw at (423) 757-7687



PrattLiving.com

The Orchid Floor Plan



The Orchid home plan, features 3 spacious bedrooms and 2 full bathrooms to match. Walking through the front door, you'll find the first guest bedroom at the front of the house and across the hall, just past the garage entry, is the second guest bedroom with a full bathroom in the hall. Wide doorways make for easy wheel-chair access throughout the home, a very unique design feature you don't see often.

Moving through the hall, you're greeted by the spacious, open-concept kitchen and great room with sliding glass doors that open up to your private patio oasis. Just a short walk from the kitchen, your laundry room is just outside of the master bedroom. In the bedroom, you'll find the large en-suite with double-vanities, a roll-in shower, plus a spacious walk-in closet.