

1681 Destiny Dr, Hixson, TN 37343



The Piedmont

Homesite 14

Quick Look

\$391,900

Beds 3

Baths 2

Stories 1

SqFt 1,711



learn more
about this
home

Community

Nestledown

Features

- Spacious 2-Car Garage
- Covered Patio
- Granite Countertops
- Walk-In Pantry
- Maintenance Free Living



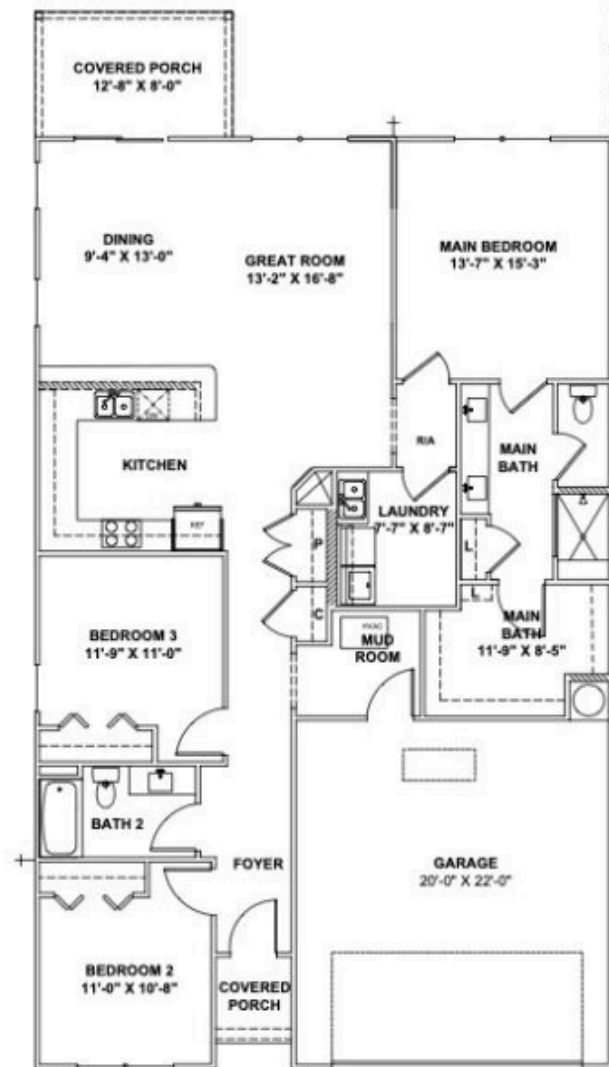
Contact a New Home Specialist

Call Brittany Shaw at (423) 757-7687



PrattLiving.com

The Piedmont Floor Plan



Introducing **The Piedmont** home design featuring just over 1,700 square feet of living space. This signature single-level living plan includes 3 bedrooms and 2 bathrooms, with ample space for family or guests. Entertain in style with a gourmet kitchen that features granite countertops, a spacious island, walk-in pantry, tile backsplash, under cabinet lighting, and top-of-the-line stainless steel appliances.

Step from the open great room to a cozy covered patio to enjoy the breeze. The master bathroom features an indulgent oversized shower with a full tile bench, perfect for relaxation.



© Pratt home builders. all rights reserved. reproduction of the illustrations or working drawings by any means is strictly prohibited. all enclosed elements are representational; actual homes and floor plans may vary.